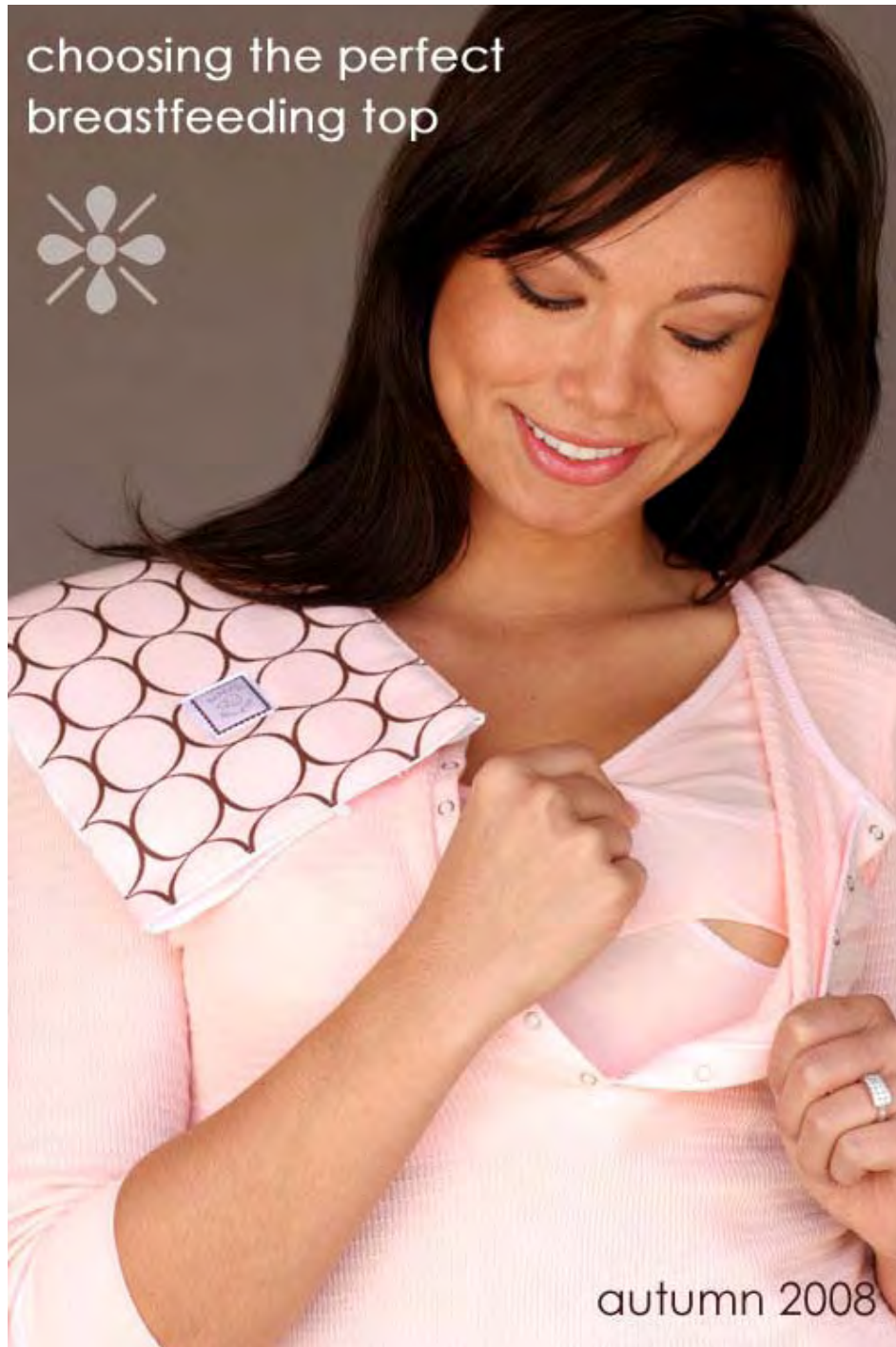




choosing the perfect
breastfeeding top



autumn 2008



new to **breastfeeding?**



Then I hope I can help you to make an informed decision on which top to buy that will suit you best! After 3 years of breastfeeding my first son Mitchell and currently nursing my second son Koby at 3 months, I truly have experience and a good grasp on all the feeding tops available on the market.

I've created an easy to read table which illustrates the different styles and how they work.

On the following pages you'll find our current nursing wear catalogue and an order form that you can either email or fax back!

Our fantastic website also has much more detailed information and pictures so please do check back often for new styles!

www.QueenBee.com.au

If ever you need more assistance please don't hesitate to email admin@queenbee.com.au or phone 02 9983 0908!

Good luck!!

love queen bee
XXXX



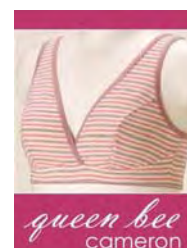
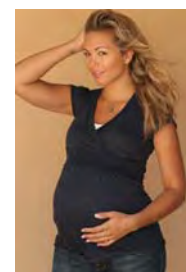
Telephone: 02 9983 0908 Fax: 02 9475 0508 Email: admin@queenbee.com.au

Address: PO Box 1578 Chatswood NSW 2057 Australia

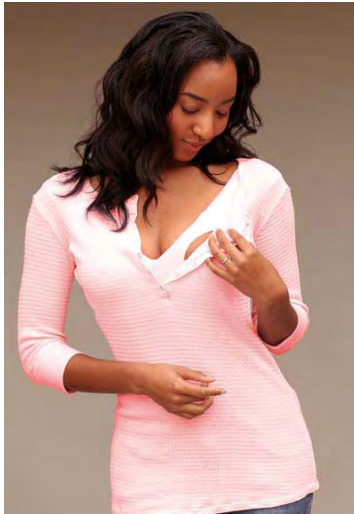
abn 90 091 597 027

Nursing access type	description
<p>totally discreet nursing access with built in support bra</p>	<p>These tops have a 'built-in elastic shelf bra' underneath so no need to wear your own!</p> <p>Breastfeeding is such a breeze in these styles so feel free to nurse in public with guaranteed discreetness.</p> <p>NB: <i>I personally recommend these styles for smaller chested ladies – once you hit DD cups I suggest that you should wear your own maternity bra for more support (see below for styles)</i></p>
<p>has a discreet nursing layer but you need to wear your own bra</p>	<p>There is a much greater selection of styles here but you do need to wear your OWN nursing bra.</p> <p>The style you choose depends on the nursing access you feel the most comfortable with. There are 3 categories:</p>
<p>A just 'lift up' nursing access</p>	<p>These tops generally have a 'double layer' at the front.</p> <p>The under layer has 2 generous openings cut out at the breast area so when you lift the top layer your tummy is fully covered and you can easily breastfeed your baby.</p> <p>It will just look like your baby is asleep in your arms – no one will know you are breastfeeding!</p>
<p>B Just 'pull aside' nursing access</p>	<p>These tops are cleverly designed so you just 'pull aside' to access nursing openings.</p> <p>Some ladies may prefer these styles in warmer weather as there is no 'double front layer' (as above)</p> <p>Generally there is just an overlap of fabric above the empire line so you can just 'pull aside' to nurse. How easy is that?! The top layer will keep you discreet when nursing in public!</p>
<p>C Super stylish with nursing access only (no discreet layer)</p>	<p>These nursing tops don't have a 'discreet layer' but just provide easy nursing access when breastfeeding.</p> <p>Most styles have a crossover front for easy nursing access or a button up front placket so you can access your nursing bra.</p>
<p>Our lingerie faves....</p>	<p>The hottest sellers at Queen Bee are our nursing/sleep bras.</p> <p>They are currently available in 4 different prints – what makes them so unique is the built in inner pocket which enables you to slip nursing pads in!</p> <p>They are made in a super soft, breathable cotton stretch blend – so make sure you pack 2 for your hospital stay!</p>

example



totally discreet nursing access **with built in support bra**

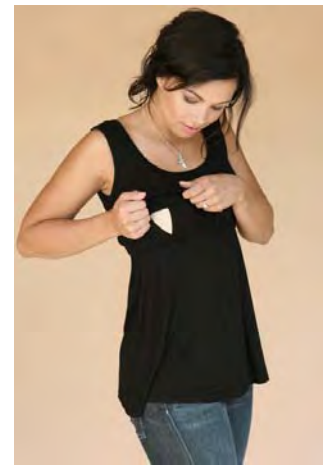


<p>Ov104 – 1 in the Oven nursing henley – BEST SELLER!! RRP: \$99 SIZES: S – XL COLOURS: french pink, baby blue, faded black, black, olive, jasmine</p>	<p>E6405 – Expressiva Nursing Cami w built in shelf bra RRP: \$59.95 SIZES: M – XL COLOURS: off white, black</p>
---	--

has a discreet nursing layer but you need to **wear your own bra**



✱ **A** just 'lift up' nursing access



<p>MW1060 – Cameron Scoop Neck RRP: \$57 SIZES: S – XL COLOURS: dusty pink, brown, black</p>	<p>MW3052 – Lucia Knotted Nursing Top RRP: \$59 SIZES: S – XXL COLOURS: black, navy</p>	<p>MR011 – Lucy Nursing Tank RRP: \$98.95 SIZES: S – XL COLOURS: black, midnight blue</p>
--	---	---

✱ **B** Just 'pull aside' nursing access



MR010 – Mia Feeding Top
 RRP: \$89.50
 SIZES: S – L
 COLOURS: heather grey, black

MR012– Short Sleeve Nursing Henley
 RRP: \$106.95
 SIZES: S – L
 COLOURS: heather grey, black

MW3053 – Shirred Kimono Top
 RRP: \$64
 SIZES: S – XL
 COLOURS: deep pink, yellow

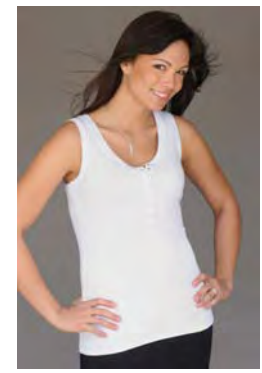
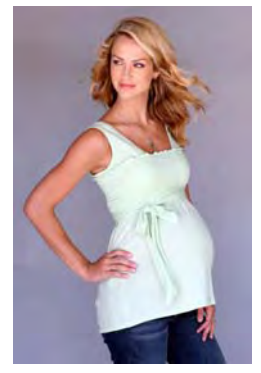


MW1071 – Taylor Crossover Tunic
 RRP: \$64
 SIZES: S – XL
 COLOURS: navy, dark brown

MW1072– Cara Nursing Tunic
 RRP: \$64
 SIZES: S – XL
 COLOURS: navy, black

MW3048– Jacinta 3 way Nursing Top
 RRP: \$64
 SIZES: S – XL
 COLOURS: navy

✱ **C** super stylish with nursing access only (no discreet layer)



OV146 – Shirred Tube Top
 RRP: \$98.95
 SIZES: S – XL
 COLOURS: baby green, periwinkle

OV124 – Minidot Nursing Top
 RRP: \$91
 SIZES: S – XL
 COLOURS: navy

OV130– Pointelle Nursing Tank
 RRP: \$82.95
 SIZES: S – XL
 COLOURS: French pink, baby blue, baby green (available Mar08)

our lingerie faves.....



queen bee
cate



queen bee
cameron



queen bee
venetia



queen bee
madison

BR1538 – Cate
Nursing/Sleep Bra
RRP: \$29.95
SIZES: SM/ML

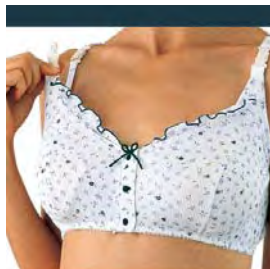
BR1539 – Cameron
Nursing/Sleep Bra
RRP: \$29.95
SIZES: SM/ML

BR1540 – Venetia
Nursing/Sleep Bra
RRP: \$29.95
SIZES: SM/ML

BR1541 – Madison
Nursing/Sleep Bra
RRP: \$29.95
SIZES: SM/ML



queen bee
eva nursing bra



queen bee
hayden nursing bra



queen bee
jacqueline nursing bra

BR1506 – Eva Nursing Bra
RRP: \$42.95
SIZES: SM/ML

BR1507 – Hayden Nursing Bra
RRP: \$42.95
SIZES: SM/ML

BR1532 – Jacqueline Nursing Bra
RRP: \$42.95
SIZES: SM/ML



N1067 – Queen Bee Red Floral Nursing Cami
RRP: \$52
SIZES: SM/ML

N1068 – Queen Bee Blue Floral Nursing Cami
RRP: \$52
SIZES: SM/ML

